



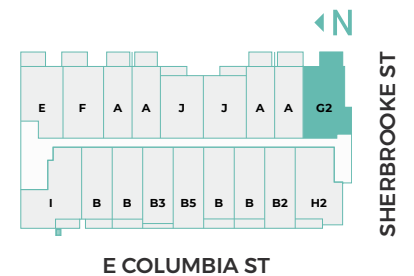
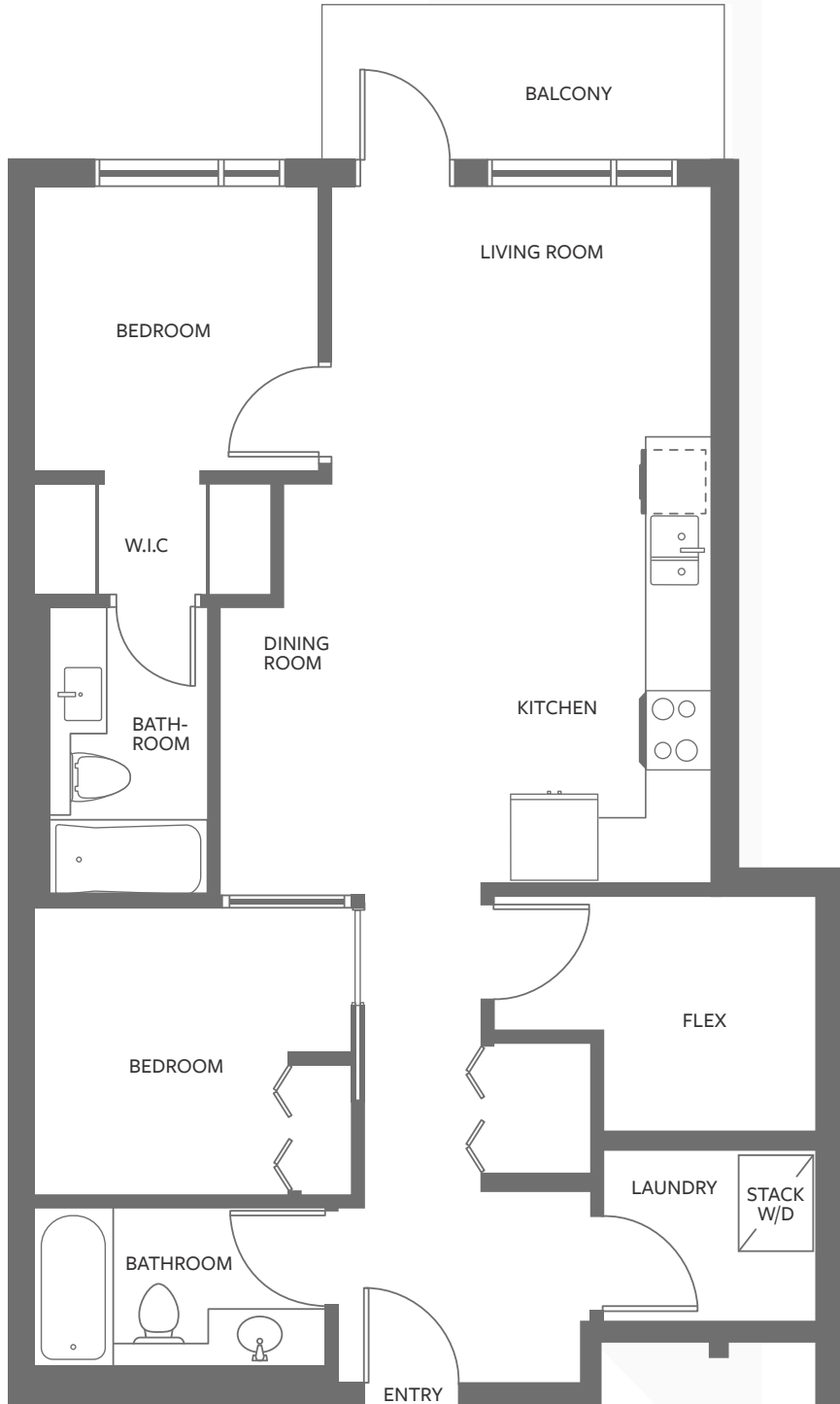
PREMIERE

UNIT G2

2 BED | 2 BATH | FLEX

INTERIOR 897 SF

408 EAST COLUMBIA STREET
NEW WESTMINSTER



I4 Property Group reserves the right to make modifications to the floor plans, project design, specifications and features. Suite size and floor plan layouts are approximate and may vary. Sill heights may vary. Exterior space varies as per plan. E.&O.E. May 2022.

